

Starting valves and filling valves in modular block design serve to raise the pressure gradually in pneumatic systems when they are being started, for example after emergency shut-off. When switched on, throttles release at first only a small orifice. Only when the pressure has reached about 60% of operating pressure is the full orifice opened. In the opposite direction (relieving) the full orifice is opened by means of a non-return valve. In combination with *ewo*-equipment such as the 3/2-way valve, ball valve or solenoid valve a complete on-and-off unit can be assembled. Port sizes G<sup>1/4</sup> to G 1.

**Only suitable for closed systems!**

### Technical Data

	I		Size		II
<b>Thread</b>	G <sup>1/4</sup>	G <sup>3/8</sup>	G <sup>1/2</sup>	G <sup>3/4</sup>	G 1***
<b>Nominal rates of flow*</b>	1200NI/min	1400NI/min	3800NI/min	4200NI/min	
<b>Point of dispatch**</b>		about 0,6 x working pressure			
<b>Working pressure range</b>	2 to 25bar				
<b>Max. surrounding temperature</b>	50°C				
<b>Material</b>	zinc alloy				
Housing					
<b>Weight</b>	295 g				730 g (G1 = 1190 g)

\* measured at 6bar pre-pressure (p<sub>1</sub>) and Δp = 1 bar.

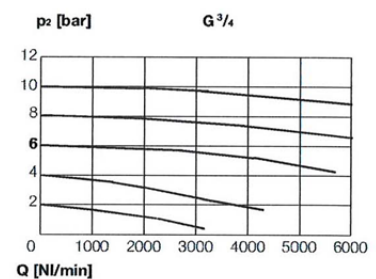
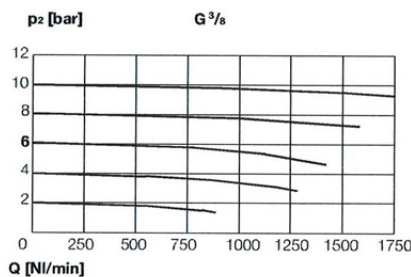
\*\* profile completely opened

\*\*\* mounting plates G 1

Article no. VA 26 is composed of the following articles:

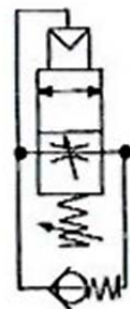
VA 25 + Mounting plates set VZ 500

### Rates of flow



### Dimensions [mm]

Threat	A	B	C	E	F	H	J	K	øL	M
G <sup>1/4</sup> , G <sup>3/8</sup>	48	54	48	24	24	30	43	14,5	4,4	53
G <sup>1/2</sup> , G <sup>3/4</sup>	70	72	70	36	35	36	62	18	5,4	75
G 1	125	72	70	36	35	36	62	18	5,4	75



Mounting plates set G 1

